






Liaoning

	Brief	05
	Sights	05
	Eating	13
	Notes	16
	Maps	17



① **Shenyang Palace Museum**
沈阳故宫博物院



② **Dalian Golden Pebble Beach Resort**
大连金石滩度假区



③ **Benxi Water Cave**
本溪水洞



④ **Qianshan Scenic Area**
千山风景区



⑤ Red Beach National Scenic Corridor
红海滩国家风景廊道



⑥ Dandong Yalu River Broken Bridge
丹东鸭绿江断桥



⑦ Dalian Laohutan Ocean Park
大连老虎滩海洋公园



⑧ Jinzhou Bijia Mountain
锦州笔架山



9 Xingcheng Ancient City
兴城古城



10 Shenyang Qing Zhaoqing Mausoleum
沈阳清昭陵



11 Dandong Phoenix Mountain
丹东凤凰山



12 Fushun Hetuala City
抚顺赫图阿拉城



13 Yingkou Wanger Mountain 营口望儿山



14 Chaoyang Phoenix Mountain 朝阳凤凰山

Brief

Chongqing's customs and local culture are imbued with the flavor of Bayu. Dining options include the bubbling red broth of hot pot, spicy and fragrant small noodles, and traditional fried dough twists (mahua) and strange-flavored broad beans, all common street vendors. The architecture retains the ancient charm of stilt houses, with old teahouses nestled amidst the bluestone slabs of Ciqikou. Sichuan opera performances of face-changing and fire-breathing are commonplace. Festivals feature the Tongliang Dragon Dance, while the humorous Chongqing dialect can be heard daily. The Yangtze River Cableway and the uphill climbs showcase the vibrant energy and energy of this "8D Mountain City."

Why Go Here

- Enjoy magical scenery
- Savor spicy delicacies
- Experience the charm of Bayu

Basic info

Time zone: CST (UTC+8)

Area code: +86/023

Postal code: 400010

Language: Mandarin

Currency: RMB, called "Yuan", "Jiao", "Mao",

10 Jiao = 1 Yuan

Plug:  

Voltage: 220V

Frequency: 50 Hz

Currency conversion:

RMB: ¥

US dollars: 1 USD = 7.2559 RMB

1 RMB = 0.1378 USD



Police: 110

Medical Care: 120

Traffic Accident: 122

Fire Emergency: 119

Sights

Shenyang Palace Museum 沈阳故宫博物院



The Shenyang Imperial Palace is one of only two intact palaces in China, having served as both the Later Jin imperial palace and the Qing dynasty's imperial palace in Shengjing. Divided into three sections: east, middle, and west, it houses the Dazheng Hall and Chongzheng Hall, housing a vast collection of imperial artifacts. Its magnificent architecture showcases the imperial grandeur and historical heritage.

Address

No. 171, Shenyang Road, Shenhe District,
Shenyang City, Liaoning Province 辽宁省沈阳市
沈河区沈阳路171号

Recommended play time: 3 hours

Opening Hours

09:00-16:30 (Tuesday-Sunday, October 11th - April 9th of the following year) Closed to the public (Monday, October 9th - October 11th of the following year)

08:30-17:00 (Tuesday-Sunday, April 10th - October 10th of the following year) Closed to the public (Monday, April 10th - October 10th of the following year)

Transportation

● By bus:

① Take bus No.

117/118/132/140/213/222/228/257/276/287/290/292/294/296 to Forbidden City Station and walk about 5 minutes to the destination.

② Take bus No.

105/113/117/131/133/150/168/218/219/237/248/273/298 to Dadongmen Station. Pass Dadongmen (Fujinmen) and walk west for about 10 minutes to the destination.

③ Take bus No.

207/212/224/227/326/333/334 to Daximen (Huaiyuanmen) Station. Pass Huaiyuanmen and walk east for about 10 minutes to the destination.

● Subway:

① Take Line 1 to Zhongjie Station or Huaiyuanmen Station, then walk about 10 minutes to the destination.

② Take Line 2 and transfer to Line 1 at Qingnian Dajie Station.

② Dalian Golden Pebble Beach Resort 大连金石滩度假区



Golden Pebble Beach Resort is ideal for exploring from May to October, known as Dalian's "back garden."

It's about a 50-minute ride on Rapid Rail Line 3 from Dalian Railway Station. Save money with a package ticket and enjoy the sightseeing loop bus. The resort boasts the thrilling Discoveryland, a 5-kilometer golden coastline, a coastal geological park dotted with unusual rocks, a wax museum, and other leisure facilities, including hot springs and golf courses, making it ideal for a multi-day trip.

Address

Jinshi Road, Jinzhou District, Dalian City, Liaoning Province 辽宁省大连市金州区金石路

Recommended play time: 3 days

Opening Hours

Open all day.

Opening hours vary by attraction within the scenic area. Please call for details.

Transportation

● You can take Changhe No. 807 or Jinshi No. 3 bus to Mysterious East (bus stop) and walk to the hotel.

③ Benxi Water Cave 本溪水洞



Benxi Water Cave is the world's longest underground river, accessible by boat. It features both dry and water caves, boasting a variety of stalactites. The scenic area includes the water cave and a geological museum, and a tour of the water cave lasts approximately 20 minutes. Restaurants in the scenic area are expensive, so visitors are advised to bring their own food.

Address

Xiejiawaizi Village, Benxi Manchu Autonomous County, Benxi City, Liaoning Province 辽宁省本溪市本溪满族自治县谢家崴子村

Recommended play time: 4 hours

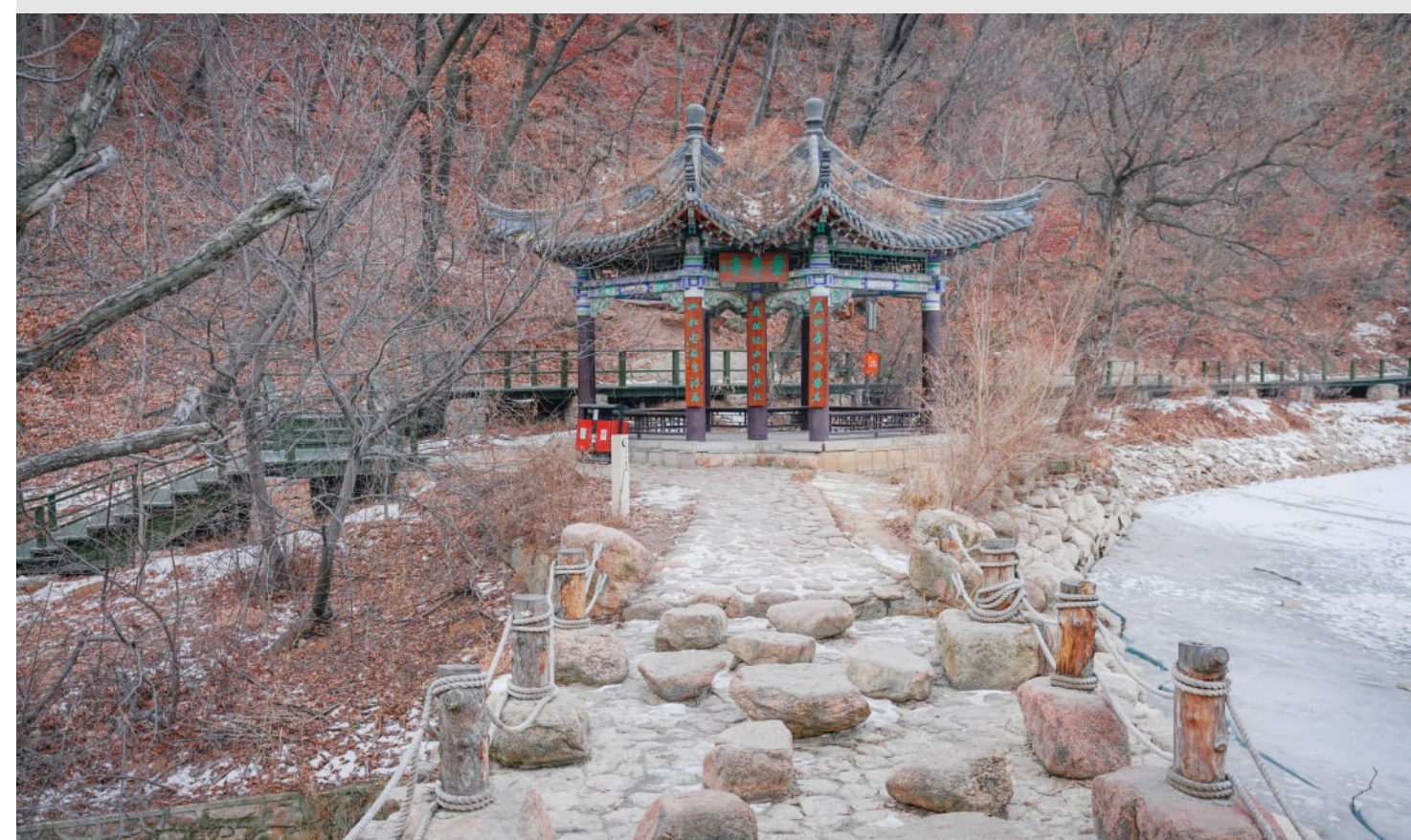
Opening Hours

08:00-16:30 (January 1st - December 31st, Monday-Sunday)

Transportation

- Public Transportation: ① Take bus K642 to Benxi Water Cave Scenic Area Station, which is within walking distance.
- ② Shenyang - Benxi. The Water Cave Scenic Area is located in Benxi Manchu Autonomous County, southeast of Benxi City, approximately 7 kilometers from Xiaoshizhen Railway Station, which primarily handles passenger and freight services from Benxi to Tianshifu Town (Xitian Line).

④ Qianshan Scenic Area 千山风景区



Qianshan, bordering the Bohai Sea to the south and Changbai Mountain to the north, is named for its nearly 1,000 lotus-shaped peaks. It is a Taoist sanctuary, home to scenic areas such as the Immortal Terrace and the Giant Buddha. For a day trip, we recommend combining a scooter, hiking, and a cable car ride to enjoy breathtaking views of the One Line Sky and the Maitreya Buddha.

Address

JNo. 79, Qianshan East Road, Qianshan District, Anshan City 鞍山市千山区千山东路79号

Recommended play time: 3 days

Opening Hours

6:00-18:00 all year round

Transportation

- Take bus No. 8A, No. 8A Taiping Line, or No. 8 Jade Buddha Temple Line to Qianshan Scenic Area (bus stop) and walk to the area.

⑤ Red Beach National Scenic Corridor 红海滩国家风景廊道



The Red Beach National Scenic Corridor is a 5A-rated scenic spot and one of China's ten most stunning wetlands. Located at the mouth of the Liaohe River, its salsa grass and reed marshes create a vibrant ecological landscape and are home to red-crowned cranes. Beautiful in all seasons, it also features attractions like the rice field train, making it a popular destination for self-drive and eco-tours.

Address

Binhai Avenue, Zhaoquanhe Town, Dawa District, Panjin City, Liaoning Province
辽宁省盘锦市大洼区赵圈河镇滨海大道

Recommended play time: 4 hours

Opening Hours

8:00-17:30 all year round

Transportation

- Direct Bus:

You can catch a bus to the Red Beach Resort from the entrance of the Xinglongtai Jinjiang Hotel in the city. The bus runs approximately every hour and takes about 1.5 hours. From the resort entrance, take a taxi or tricycle to the entrance of the Red Beach Scenic Area, which takes about 10 minutes.

- Taxi or Chartered Car:

Panjin Railway Station is approximately 50 kilometers from the Red Beach Scenic Area. It's best to have the driver take you directly to the main entrance of the Red Beach Scenic Area, rather than at the Red Beach Resort Reception Center, to avoid wasting time transferring.

⑥ Dandong Yalu River Broken Bridge 丹东鸭绿江断桥



The Broken Yalu River Bridge is a landmark attraction in Dandong, located adjacent to the Sino-Korean Friendship Bridge. Built in 1911, it serves as a testament to the War to Resist U.S. Aggression and Aid Korea. The bridge bears numerous bullet scars and features observation platforms, artillery towers, and other relics. Painted light blue as a symbol of peace, the bridge offers panoramic views of both sides of the Strait.

Address

No. 0 Jiang'an Road, Dandong City
丹东市江岸路0号

Recommended play time: 2 hours

Opening Hours

10:00-17:00 all year round

Transportation

- Bus: Take bus No. 105, 121, 127, or 303 to Broken Bridge (bus stop) and then walk to the destination.



Tiger Beach Ocean Park, located on Dalian's southern coast, nestled between mountains and the sea, offers a unique blend of marine life viewing and coastal scenery. Visitors can watch performances featuring beluga whales and dolphins, explore the marine and coral aquariums, and take the cable car

across the sea to the "Bird's Singing Forest" for birdwatching. There's also a sea yacht, a 4D cinema, Jurassic rapids, and bungee jumping. After a long day, head to the beach to enjoy the ocean.

Address

No. 9 Binhai Middle Road, Zhongshan District, Dalian 大连市中山区滨海中路9号

Recommended play time: 3 days

Opening Hours

8:30-16:30 all year round

Transportation

- By bus: Take bus No. 2/4/30/403/404 to Laohutan (bus stop). It's a short walk to the beach.
- Dalian City Tour Buses have boarding and alighting stops at Laohutan (they only operate during peak tourist season, departing and arriving at the South Square of Dalian Railway Station). This is a tourist loop that circles Dalian's main streets and scenic spots.



Bijia Mountain, a small island off the coast of western Liaoning, is a Taoist landmark, named for its three peaks shaped like a pen holder. The mountain boasts Taoist temples such as Sanqing Pavilion. The "Heavenly Road" is a 1.6-kilometer tidal cobblestone path. Access to the island is by foot at low tide, but requires a boat ride at high tide, so be sure to check the tide chart. Affordable seafood is available at the beach below.

Address

No. 1 Bohai Street, Taihe District, Jinzhou City
锦州市太和区渤海大街1号

Recommended play time: 5 hours

Opening Hours

06:00-18:00 all year round

Transportation

- By car: Take the Huyue Express bus from Jinzhou Railway Station to the Bijiaoshan Scenic Area. The bus departs at 5:50 AM daily, running every 10 minutes, with the last bus at 6:30 PM. The one-way fare is 10 yuan per person, and the round-trip fare is 20 yuan. The journey takes about one hour.

Speedboat within the scenic area: The one-way fare is 15 yuan per person, and the round-trip fare is 30 yuan.



Xingcheng Ancient City is a complete ancient city built during the Ming Dynasty and is one of four Ming Dynasty ancient cities in China. Within the city, you'll find ancient sites such as the Wengcheng (barbican) and the Bell and Drum Tower, and it was once the garrison of Yuan Chonghuan. Climb the city walls for panoramic views, stroll the pedestrian street for shopping, and a combined ticket includes access to the Ji-Liao Military Governor's Mansion, the Confucian Temple, and more.

Address

Around No. 14 Weiyuan Street, Gucheng Street, Xingcheng City, Huludao City, Liaoning Province

辽宁省葫芦岛市兴城市古城街道威远街14号附近

Recommended play time: 2 hours

Opening Hours

8:00-17:00

Transportation

- By bus: Take Xingcheng Bus No. 1, Xingcheng Bus No. 2, Xingcheng Bus No. 2 Bingjia Section, Xingcheng Bus No. 3, or Xingcheng Bus No. 9 to Gucheng South Gate Station. The station is within walking distance.
- Train: Take the Shenyang-Xingcheng train. From Xingcheng Railway Station, walk east for about 10 minutes.



Located in Shenyang's Huanggu District, the Zhaoling Mausoleum of the Qing Dynasty is the mausoleum of Huang Taiji. It is one of the "Three Tombs Outside the Great Wall,"

a World Cultural Heritage site and a 4A-rated scenic spot. Construction began in 1643 and features buildings such as the Main Red Gate and over 2,000 ancient pines. Beiling Park, a vibrant blend of heritage and leisure, offers beautiful scenery year-round, with cherry blossoms in full bloom in spring and apricot blossoms in autumn.

Address

No. 12, Taishan Road, Huanggu District, Shenyang 沈阳市皇姑区泰山路12号

Recommended play time: 2 hours

Opening Hours

08:00-16:00 all year round

Transportation

- Take bus 121/200 to Jinshan Road Lingbei Street Station and walk to the destination



Dandong's Phoenix Mountain, located in the southern suburbs of Fengcheng City, is renowned for its beautiful mountain scenery. Its cool summers offer a perfect escape from the heat, while October, when the mountain is blanketed in crimson maples, is a perfect backdrop for autumn viewing. While its main peak isn't high, it's steep and boasts the "Old Ox Back" (Old Bull's Back), along with tranquil springs, caves, and temples. A temple fair is held on the 28th day of the fourth lunar month, creating a bustling atmosphere.

Address

No. 800, Fengshan Road, Fengcheng City, Dandong City 丹东市凤城市凤山路800号

Recommended play time: 3 days

Opening Hours

06:00-16:00 all year round

Transportation

- By car: Exit Fengcheng Expressway, go straight for 3 kilometers, and turn right.
- By train: Take the high-speed train from Dandong Station for 14 yuan, arriving at Fengcheng East Station in approximately 20 minutes. From there, take a taxi to Fenghuang Mountain for approximately 10 yuan.
- By train: Take the train from Dandong Station for 9 to 11 yuan, arriving at Fengcheng Station in approximately one hour. From there, transfer to bus No. 10 (running every 20 minutes) to the entrance of Fenghuang Mountain.

- By bus: Take the bus from the bus station for 15.5 yuan, departing approximately one hour at Fenghuang Mountain.
- Taxi: Take a taxi from the bus station entrance for 25 yuan per person to Fenghuang Mountain.



Hetuala City, located in Xinbin County, Fushun, overlooks the Yongling Mausoleum of the Qing Dynasty across the water, offering convenient transportation. It offers Manchu songs and dances, unique cuisine, and abundant local specialties year-round. Guyuxia boasts unique blue-brick architecture, a cultural gallery,

and a folk museum, making it a renowned scenic spot dedicated to pre-Qing history and integrating multiple activities.

Address

Laocheng Village, Yongling Town, Xinbin Manchu Autonomous County, Fushun City, Liaoning Province

辽宁省抚顺市新宾满族自治县永陵镇老城村

Recommended play time: 3 hours

Opening Hours

8:00 AM - 5:00 PM (April 1st - October 31st, Monday - Sunday)

8:30 AM - 4:00 PM (November 1st - March 31st, Monday - Sunday)



Wang'er Mountain, a renowned mountain in southern Liaoning Province, sits at 106 meters above sea level in Xiongyue Town, Yingkou. Named after a legend of maternal love, the blue-brick tower on the summit resembles an old woman watching over her child. Now a 3A scenic spot, it boasts over ten maternal love attractions, including the Statue of Loving Mother and the Wang'er Tower. The Loving Mother Pavilion and the maternal love sculpture complex attract maternal worshippers from both home and abroad.

Address

Wangershan Village, Xiongyue Town, Bayuquan District, Yingkou City, Liaoning Province 辽宁省营口市鲅鱼圈区熊岳镇望儿山村

Recommended play time: 3 hours

Opening Hours

8:00-16:30

14 Chaoyang Phoenix Mountain 朝阳凤凰山



Phoenix Mountain in Chaoyang, located 4 kilometers east of downtown Chaoyang, stands at an altitude of 660 meters. Lushly forested, it is a renowned historical mountain and Buddhist sanctuary in western Liaoning, known as the "ancestral home" of Buddhism in Northeast China. It boasts natural wonders such as the Giant Buddha, as well as historical sites such as the Three Pagodas and Four Temples. It is also an important habitat for black storks.

Address

Bodhi Road, Shuangta District, Chaoyang City, Liaoning Province

辽宁省朝阳市双塔区菩提路

Recommended play time: 5 hours

Opening Hours

08:00-17:00 all year round

Eating

Liaoning cuisine blends mountain and sea flavors with the rich heritage of Manchuria and Han China, with 196 iconic dishes showcasing their unique character. Shenyang's braised, smoked, and grilled chicken racks are all flavorful, embodying a sense of urban life; Dalian's sea urchin dumplings and charcoal-grilled conch are incredibly fresh. Jinzhou's barbecue is smoky and full of flavor, while Fushun's spicy and sour mixed dishes are appetizing. There's also the soft and glutinous snow bean paste, the plump river crabs of Panjin, and the sauerkraut hotpot and sour soup, all embodying folklore. Every bite tells a story of Liaoning's flavors.

◆ Shenyang chicken racks 沈阳鸡架

Shenyang chicken racks, a symbol of the city amidst the hustle and bustle of life! The smoky aroma penetrates the bones, the meat is tender and juicy, and each crisp bite is filled with the boldness of Northeast China and the warmth of the city. It's a memory of Shenyang on your tongue!



◆ Laobian dumplings 老边饺子

Laobian dumplings, with their thin wrappers and generous fillings, are bursting with flavor! Handcrafted with centuries of tradition, they deliver a delicious, sizzling broth, a mouthful of flavor – a true culinary masterpiece that embodies the deepest "taste of home" in Shenyang.



◆ Majia shumai 马家烧麦

Ma's Shaomai has been passed down since the Jiaqing period of the Qing Dynasty. It has a thin skin and delicious filling, is shaped like a pomegranate, and is juicy and full of salty fragrance. It is blessed with intangible cultural heritage and is a vivid footnote to Shenyang's century-old food culture.



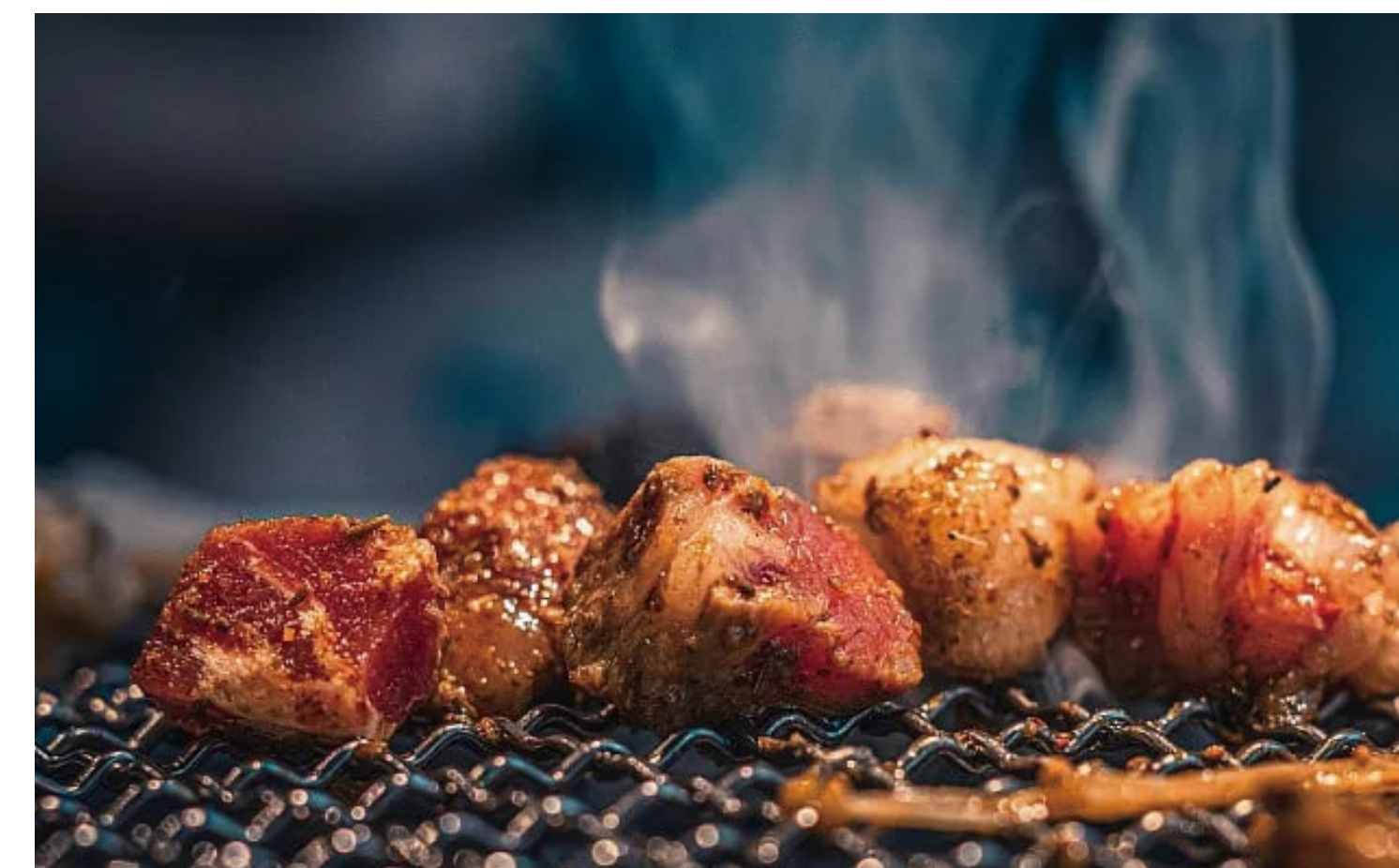
◆ Dalian salted fish pancakes 大连咸鱼饼子

Dalian salted fish pancakes, the salty fragrance of the sea breeze permeates the pancakes, the salted fish is crispy, and the pancakes are soft and chewy. When you take a bite, the flavors of mountains and seas are intertwined. It is a vivid memory on the fishermen's table, simple but touching the heart.



◆ Jinzhou barbecue 锦州烧烤

Jinzhou barbecue, the aroma of charcoal grilling fills the air! The skewers are tender and juicy, the seasoning is spicy and satisfying, and the aroma of fireworks is so strong that it is the most intense "human taste" in the Northeast night market, which makes you want to stop.



◆ Goubangzi smoked chicken 沟帮子熏鸡

Goubangzi smoked chicken, a classic made with centuries of smoking techniques! Glossy red, with crispy skin and tender meat, the smoked chicken is deeply fragrant, salty and fresh. One bite reveals the most mellow, traditional flavor of Northeast China, a fragrance that permeates time.



◆ Panjin river crab 盘锦河蟹

Panjin river crabs, nourished by wetlands, are rich and plump. Grown in rice paddies, they are tender and tender, with a distinct autumn crab aroma. One bite reveals the sweet and rich flavor of Northeast China's wetlands. Here's a 50-word summary of Panjin's unique autumn delicacy.



◆ Dandong yellow clams 丹东黄蚬子

Dandong yellow clams are the most delicious seafood in Northeast China! With their thin shells and plump flesh, the broth is sweet and refreshing. Whether boiled or grilled, they are tender and juicy, and you can savor the sound of the Yellow Sea tide in one bite. They are the "delicious pearl" of the Dandong coastline!



◆ Benxi mutton soup 本溪羊汤

Benxi Xiaoshi Lamb Soup is a Liaodong specialty, inheriting centuries of Manchu craftsmanship. Using local cashmere goats in the broth, it achieves a milky, rich, and refreshing flavor without any hint of mutton. Served with chopped green onions and chili peppers, it warms the body year-round and is a must-try when visiting Benxi.



◆ Tieling huoshao 铁岭火勺

It's a flavor etched in the locals' memories! Freshly baked on a griddle, the dough is wrapped in pastry and crispy, leaving a crumbly crumb when you bite into it. The beef filling, mixed with the rich aroma of scallions, is incredibly fragrant. Serve hot with a bowl of mutton soup for a heartwarming treat.



◆ Fushun spicy hot pot 抚顺麻辣拌

Fushun's spicy spicy mixed dish is a favorite on the streets! A variety of vegetables are coated in a secret sauce, creating a delicious combination of sour, spicy, salty, and fragrant. Chewing on the chewy tofu skin and meatballs, every bite is filled with the joyful flavor of Fushun people.



◆ Haicheng Niuzhuang pie 海城牛庄馅饼

Haicheng Niuzhuang pasties are a Liaoning traditional delicacy! The dough, carefully baked to a golden brown, is as thin as a cicada's wing, yet manages to hold a generous portion of the filling. Biting into it, the juicy filling overflows with the rich aroma of meat and vegetables, offering a truly authentic Kanto experience.



Notes

Hospital

● The First Affiliated Hospital of China Medical University

中国医科大学附属第一医院

Address: No. 155, Nanjing North Street, Heping District, Shenyang

Tel: 024-961200(Switchboard)

Website: <https://www.cmu1h.com/>

Opening hours: 24 hours

● Shengjing Hospital Affiliated to China Medical University

中国医科大学附属盛京医院

Address: Nanhu Campus (No. 36, Sanhao Street, Heping District, Shenyang)

Tel: (024)96615

Website: <https://www.sj-hospital.org/>

Opening hours: 24 hours

● Northern Theater Command General Hospital 北部战区总医院

Address: Main Hospital (No. 83, Wenhua Road, Shenhe District, Shenyang)

Tel: 总机024-28856114 (Switchboard)

Website: <https://www.301hospital.com.cn/>

Opening hours: 24 hours

Contact Us



+8613775219367
+8613915017585



cs@hellochinatrip.com



HelloChinaTrip.com



Liaoning Attractions Map

